

KOBELCO

**MINI
EXCAVATORS**

SR Series

SK10SR

Bucket capacity: 0.022 m³ ISO heaped
Engine power: 6.1 kW {8.3 PS} 2,000 min⁻¹ {rpm} (ISO14396)
Machine mass: 1,040 kg



We Save You Fuel
Achieving a Low-Carbon Society

Powerful Digging Performance

Wide operating range

Max. digging depth: **1,750 mm**

Max. digging reach: **3,300 mm**

Max. digging height: **3,160 mm**

Compactness

Passes through openings less than 800 mm wide

The retraction width between the crawlers is 750 mm, including roll bars - the smallest in this class

The minimum crawler width lets it pass easily through narrow passages and access enclosed spaces.

Crawler width adjustable from 750 mm to 980 mm

Hydraulic crawler adjustment using a lever near the operator's leg makes it easy to adjust the crawler width. Retract the crawlers to pass through narrow passages and expand them to work safely and stably.



The dozer blade width is adjustable to machine width

The swing-to-fold design requires no tools to adjust the dozer blade - simply insert or remove pins.

Smallest in its class!



Excellent Performance

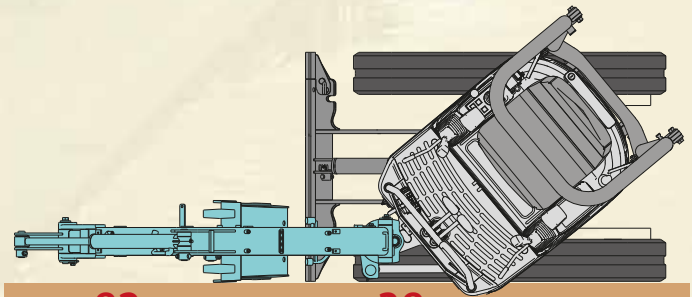
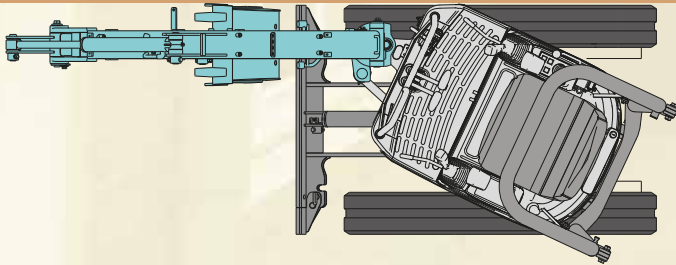
High quality digging along walls

The swing boom enables excavation and ditch digging along walls. The cab floor's low-profile corners enable digging right next to walls.

Best for work in confined spaces!

Front overhang: **0 mm**

Swing to the right



SK10SR **82 mm** Front overhang: **38 mm** Swing to the left

Exceptional Durability

High Strength!

Maintaining long-term machine value

The cast steel upper frame is robust in collisions

The new upper frame is a once piece casting with a counter-weight. The front corner design anticipates collisions during swinging.

Reinforced attachment

The boom top's forged boom point avoids spreading. The swing bracket and idler links are cast to be strong. The pin connections use high-strength steel bushings.

Prevents hydraulic piping and hoses from breaking



Bucket cylinder hoses inside the arm



Protective covers for boom-back hoses



Two piece boom cylinder hoses



Joint dozer hoses



Easy Maintenance

Improved accessibility, faster maintenance

The full-open bonnets ease and speed maintenance

Control boxes on both sides have unitized, fully opening bonnets. The large opening greatly improves ease of maintenance in filling the radiator with water, adding hydraulic oil, and charging the battery - all conventionally time-consuming.

Easy access without operation levers getting in the way.



New features make maintenance easy



Hydraulic oil tank gauge on the left guard

Fuel tank gauge on the left guard

Attachment lubrication every 250 hours except around the bucket



Fuel filter

Control valve

Radiator

Install optional attachments easily



Control-valve service valves are standard features, making it easy to install breakers and nibblers.

Side guards are easy to remove

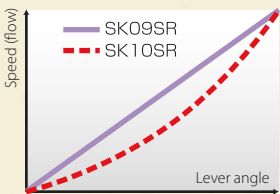
Checking control valves and cleaning the radiator are quick and easy.

Operability

Left and right operation levers have the same feel as with heavy equipment

Side levers make operation easy and comfortable

Uses side levers - the same as higher grade models. Ample leg room provides a stress-free position, enhancing operator comfort. The quick response hydraulic-pilot system is easy to operate and fine tune.



Operation levers enhance smooth startup

Adjust control valves to make operation smooth. Reducing startup hydraulic oil eases startup.



Inching work is easy with the dozer

Improved dozer jogging performance enables good quality ground leveling.

Arm rest



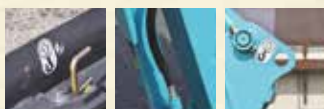
Transport

Approaches work areas quicker and more safely

Dozer approach angle of 30 degrees

The dozer is angled so that the machine can crawl on and off truck platforms safely and easily without hitting loading ramps.

Lifting eyes are standard features



Lifting eyes make machines easy to load and unload from truck platforms with a crane. Three-point lifting enhances safety.

Safety

Operator Safety

The standard roll bar feature complies with ROPS & TOPS specifications

The roll bar complies with ROPS & TOPS specifications.

Travel Alarm

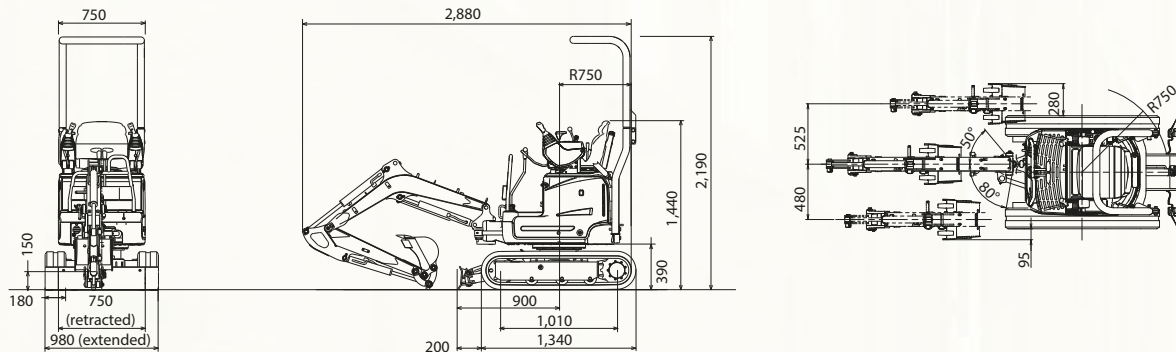


Turning on this switch sounds an alarm when the machine is moving to call attention to its movement.



Dimensions

Unit: mm



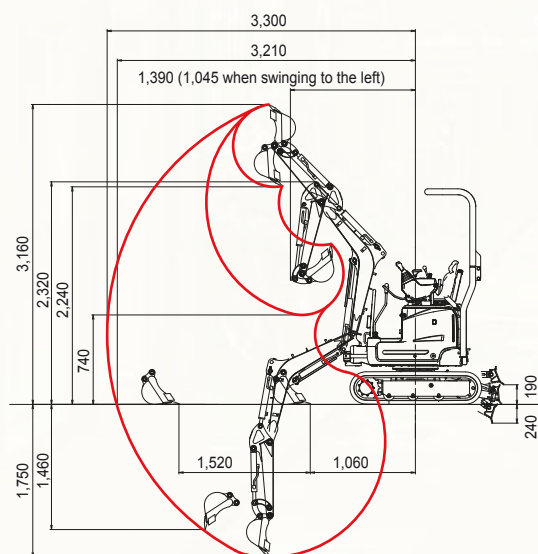
Specifications

| PERFORMANCE | | |
|-------------------------|--|--|
| Bucket capacity | m ³ | 0.022 ISO heaped |
| Travel speed | km/h | 3.7/2.0 |
| Swing speed | min ⁻¹ {rpm} | 9.0 |
| Gradeability | % (*) | 58 (30) |
| Drawbar pulling force | kN | 10.2 |
| Bucket digging force | kN | 10.8 |
| Arm crowding force | kN | 6.2 |
| WEIGHT | | |
| Machine mass | kg | 1,040 |
| Ground pressure | kPa | 27.0 |
| ENGINE | | |
| Model | YANMAR 2TNV70-WYB | |
| Type | Swirl-chamber, water-cooled, 2-cylinder, 4-cycle diesel | |
| Power output | kW/min ⁻¹ {rpm} | 6.1 {8.3 PS} /2,000 min ⁻¹ (ISO14396)* 5.9 {8.0 PS} /2,000 min ⁻¹ (ISO9249) |
| Max. torque | N-m/min ⁻¹ {rpm} | 31.7/1,500 (ISO14396)* 31.2/1,500 (ISO9249) |
| Displacement | ℓ | 0.569 |
| Fuel tank | ℓ | 10.0 |
| HYDRAULIC SYSTEM | | |
| Pump | Two variable displacement pumps and one gear pump | |
| Max. discharge flow | ℓ/min ⁻¹ | 2x11.0 + 6.0 |
| Max. discharge pressure | MPa | 20.6 |
| Hydraulic capacity | ℓ | 9.8 (tank level) 14.2 (system) |
| DOZER BLADE | | |
| Blade | mm | 750/980 width x 200 height, 190 up, 240 down |
| SIDE DIGGING | | |
| Type | Boom swing type, offset angle: 80° to the left, 50° to the right | |

*ISO14396 meets EU regulation

Working Range

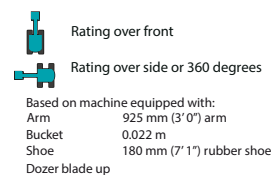
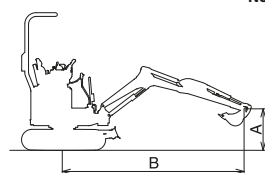
Unit: mm



Note: Red figures show the value of long arm specifications.

Lifting Capacities

| B A | LOAD RADIUS | | | | | |
|------------------|--------------|---------------|--------------|--------------|---------------|------------|
| | 1.0m (3' 3") | 1.5m (4' 11") | 2.0m (6' 7") | 2.5m (8' 2") | 3.0m (9' 10") | |
| (8'2") 2.5m | | | *460 *200 | 430 190 | | |
| (6'7") 2.0m | | | *390 *170 | *390 170 | 330 150 | 290 130 |
| (4'11") 1.5m | | | *450 *200 | *420 *190 | 330 150 | 290 130 |
| (3'3") 1.0m | | 760 340 | 640 290 | 470 210 | 400 180 | 320 140 |
| (1'8") 0.5m | | 700 310 | 590 270 | 440 200 | 380 170 | 310 140 |
| GROUND LEVEL | *900 *410 | *900 *410 | 670 300 | 570 250 | 430 190 | 370 160 |
| (-1'8") -0.5m | 1,430 650 | 1,150 520 | 670 300 | 560 250 | 420 190 | 360 160 |
| (-3'3") -1.0m | 1,460 660 | 1,170 530 | 680 310 | 570 260 | 430 190 | 370 160 |
| (4'11") -1.5m | | | | | | |



- Note:**
- Do not attempt to lift or hold any load that is greater than these lift capacities at their specified lift point radius and height. Weight of all accessories must be deducted from the above lift capacities.
 - Lift capacities are based on machine standing on level, firm, and uniform ground. User must make allowance for job conditions such as soft or uneven ground out of level conditions, side loads, sudden stopping of loads, hazardous conditions, experience of personnel, etc.
 - Bucket lift hook is defined as lift point.
 - The above lift capacities are in compliance with ISO 10567. They do not exceed 87% of hydraulic lift capacity or 75% of tipping load. Lift capacities marked with an asterisk (*) are limited by hydraulic capacity rather than tipping load.
 - Operator should be fully acquainted with the operator's and Maintenance Instructions before operating this machine and rules for safe operation of equipment should be adhered to at all times.
 - Lift capacities apply to only machine as originally manufactured and normally equipped by KOBELCO CONSTRUCTION MACHINERY CO., LTD.

Note: This catalog may contain attachments and optional equipment that are not available in your area. And it may contain photographs of machines with specifications that differ from those of machines sold in your areas. Please consult your nearest KOBELCO distributor for those items you require. Due to our policy of continuous product improvements all designs and specifications are subject to change without advance notice.

Copyright by **KOBELCO CONSTRUCTION MACHINERY EUROPE B.V.** No part of this catalog may reproduce in any manner without notice.

Kobelco Construction Machinery Europe B.V.

Veluwezoom 15
 1327 AE Almere
 The Netherlands
www.kobelco-europe.com

Inquiries to: